



Clive Court Maida Vale

, London, W9 1SF

£5,000 Per month

Daniel Ford Estates are happy to present a superb spacious 4 double bedroom apartment located in the heart of Little Venice and just a 5-minute walk from Maida Vale Station.

The property comprises of 4 double bedrooms, 4 modern bathrooms, a bright and spacious living room and a separate fully-fitted kitchen.

The apartment further benefits from a porter and is available immediately on unfurnished basis. It is conveniently located close to the cafes and boutiques of Clifton Road while St. Johns Wood and Kilburn are also close by.

Available on the 24th of January 2025

Viewing

Please contact us on 020 3198 4517 if you wish to arrange a viewing appointment for this property or require further information.

- 4 Bedroom Apartment
- 4 Bathrooms, 3 Ensuites
- Bright and spacious living area
- Separate fully fitted kitchen
- First Floor
- Lift Access
- Porter
- Available on the 24th of January 2025



4



4



1



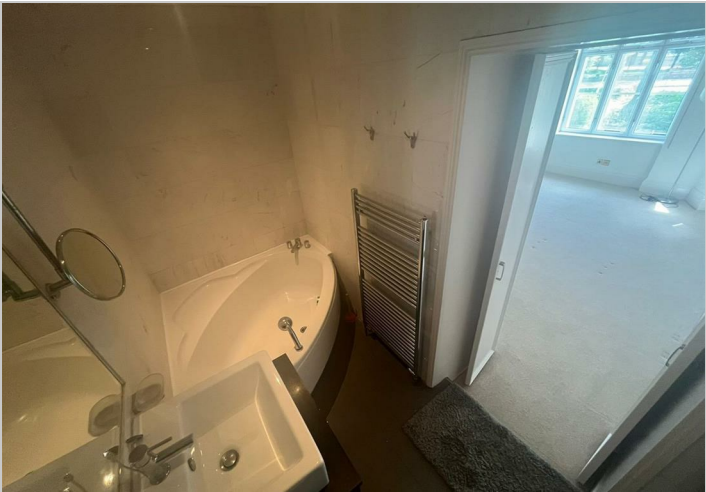
Floor Plan



Area Map



Energy Efficiency Graph



These particulars, whilst believed to be accurate are set out as a general outline only for guidance and do not constitute any part of an offer or contract. Intending purchasers should not rely on them as statements of representation of fact, but must satisfy themselves by inspection or otherwise as to their accuracy. No person in this firms employment has the authority to make or give any representation or warranty in respect of the property.